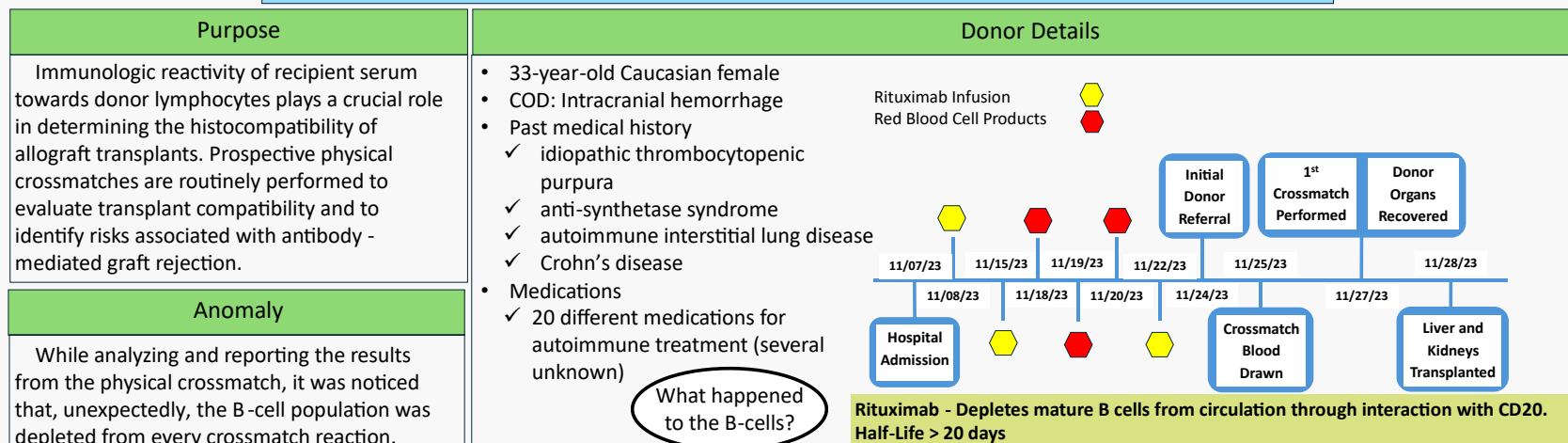
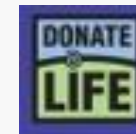


MISBEHAVING CELLS – Deceased Donor with Crohn's Disease Showed Complete Depletion of Circulating B Cells

Natalie Ruggio, BS, CHT(ACHI)¹, Gabriel Barajas, BS¹, Abigail Palasigue, BS¹, Sam Ho, PhD, F(ACHI)¹

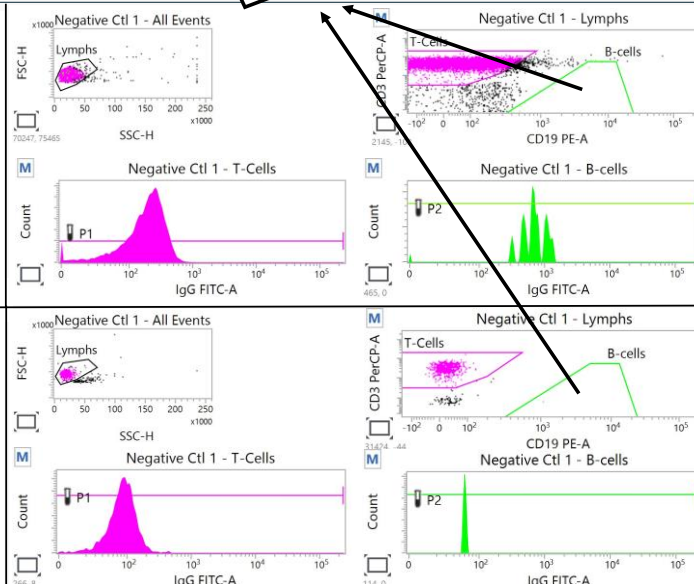
¹Laboratory, Gift of Hope Organ & Tissue Donor Network, Itasca, IL, USA



* Designates the two negative control tubes were more than 20 MCF apart, which is outside our SOP.

Control (PBL)	T Cell	B Cell
Expected Negative Range (MCF)	137-220	131-284
Expected Positive Threshold (MCS)	≥+320	≥+400
Donor Negative (MCF)	228 (avg)	*339 (avg)
Donor Positive (MCS)	386	301

Control (Spleen)	T Cell	B Cell
Expected Negative Range (MCF)	117-185	144-297
Expected Positive Threshold (MCS)	≥+320	≥+400
Donor Negative (MCF)	133 (avg)	*132 (avg)
Donor Positive (MCS)	428	481



Donation Outcome

- A combination of T-cell flow crossmatch results and B-cell virtual crossmatch results were used to determine organ acceptance
- The donor Liver and Kidneys were successfully transplanted

Conclusion

Although therapeutic interference from Rituximab on crossmatches is a well-known phenomenon, this case highlights the importance of investigating donor medication history in unusual circumstances with unexpected testing outcomes, and the fact that virtual crossmatch is a safe and reliable alternative to traditional physical crossmatch.