

# Vital Role of the Information Technology Team in Delivering and Implementing Skills Lab Assessments

Paul J. Boyle, BS; Dhara Surati, PharmD; Dave Wallace, PharmD; Joshua Wollen, PharmD; Sandy Diec, PharmD; Shantera Rayford Davis, PharmD; Jomarcel Nguyen, BS  
University of Houston College of Pharmacy, Houston, Texas

Contact Information:  
Name: Paul J. Boyle, BS  
University of Houston  
Email: pjboyle@central.uh.edu

## INTRODUCTION

The four-year, integrated PharmD curriculum at the University of Houston College of Pharmacy (UHCOP) incorporates skills lab assessments to achieve key learning outcomes. These assessments include competency check-offs, objective structured clinical examinations (OSCEs), and written exams, engaging approximately 105-120 learners per cohort.



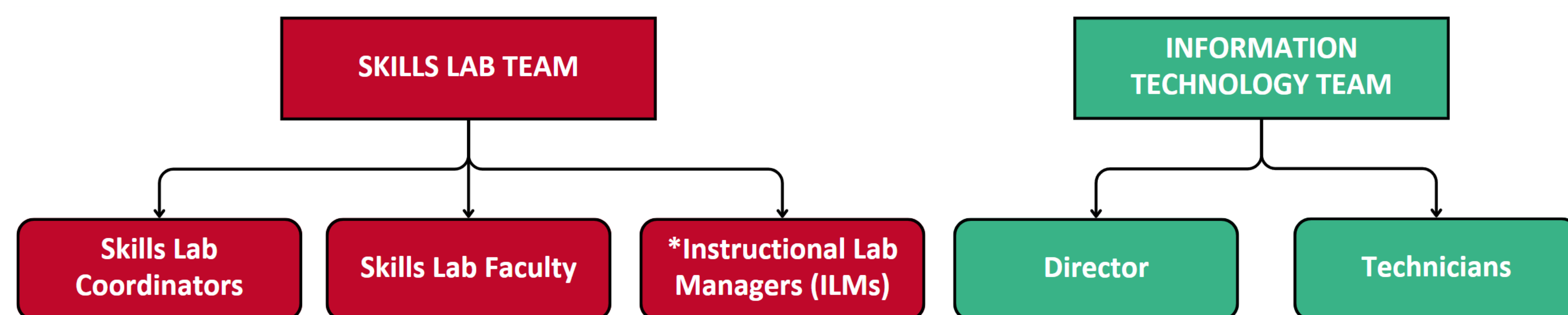
**Pharmacy Care Lab**  
65 workstations, and a mock pharmacy

**OSCE Suites**  
9 enclosed rooms and an IT control room

**Sterile Compounding Lab**  
16 hoods with cleanroom and anteroom

## PURPOSE

This poster highlights the crucial role of the Information Technology (IT) team and the collaborative, team-based approach that facilitate the development and implementation of skills lab assessments.



\*Instructional Lab Managers are registered pharmacy technicians by the Texas State Board of Pharmacy with extensive experience in various settings of pharmacy practice.

## CONCLUSION

In our integrated PharmD curriculum, skills lab assessments continue to play an instrumental role in evaluating and achieving learning outcomes. The IT team provides optimal guidance to enhance each assessment experience for every learner.

- The collaborative efforts between the IT team and the Skills Lab team have resulted in:
- ✔ More time for faculty to dedicate towards creating content, developing rubrics, and creating training materials for standardized patients and evaluators
  - ✔ Simultaneous offerings of various assessment types
  - ✔ Synchronous and asynchronous grading
  - ✔ Efficient grading turnaround time

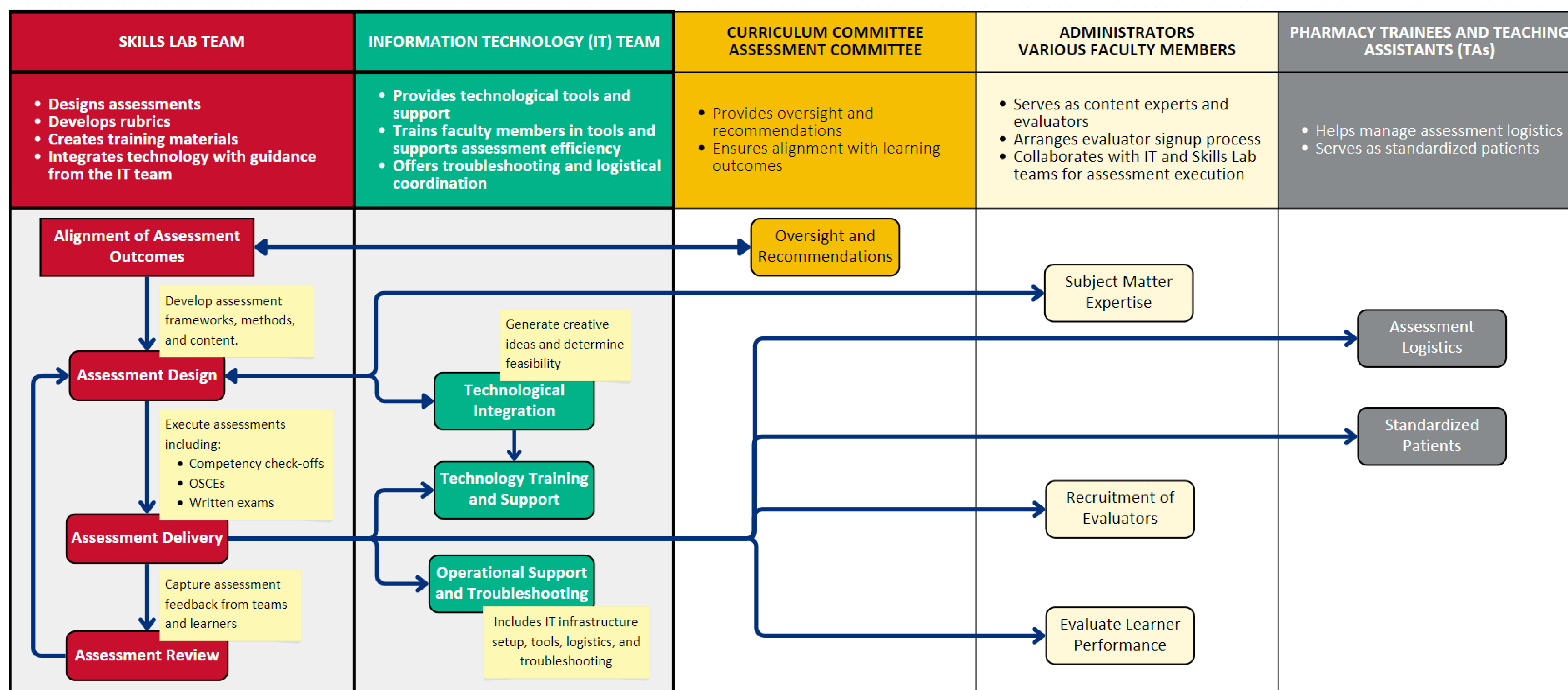
## ACKNOWLEDGEMENTS

IT team, Skills Lab team faculty, ILMs, Curriculum Committee, Assessment Committee, faculty members that serve as content experts and evaluators, pharmacy trainees, teaching assistants, and administrators at the University of Houston College of Pharmacy.

## COLLABORATIVE APPROACH

Designing and implementing skills lab assessments at UHCOP is a collaborative effort involving the Skills Lab team, IT team, Curriculum and Assessment Committees, faculty members, pharmacy trainees (residents, fellows, P4 student pharmacists), and teaching assistants (TAs). This teamwork ensures effective integration of technology, enhancing hands-on and simulated learning experiences for students.

Figure 1. Diagram Depicting Teams and Responsibilities




## TECHNOLOGICAL INTEGRATION IN ASSESSMENT DELIVERY




Technological tools play a pivotal role in delivering over 25 skills-based assessments annually across the P1 - P3 cohorts at UHCOP. Different combination of these tools are utilized for various competency check-offs, Objective Structured Clinical Exams (OSCEs), and written exams. The IT team provides technical guidance in selecting technological tools, training faculty in their use, and offering ongoing support to troubleshoot and resolve technical issues during assessments.

Table 1: Support and Integration of Tools by the IT Team in Skills Lab Assessments

|   | Tool                  | Examples of IT Team's Responsibilities   |
|---|-----------------------|--|
| Information Technology<br>Use of computers and software to store, transmit, and manage information.   | ExamSoft® by Turnitin | <input type="checkbox"/> Collaborate with Faculty on rubric/assessment design<br><input type="checkbox"/> Provide technical guidance for setting up rubrics and grader assignment.<br><input type="checkbox"/> Ensure session meets assessment requirements. |
|   | EHRGo®                | <input type="checkbox"/> Configure and troubleshoot simulated EMRs for accuracy and functionality.<br><input type="checkbox"/> Customize EMR setups according to assessment needs.   |
|   | UpToDate® Lexidrug™   | <input type="checkbox"/> Assist in configuring desktop setups in the Care Lab for optimal use.   |
|   | Canvas®               | <input type="checkbox"/> Integrate and maintain learning modules in the LMS for assessment purposes.   |
| Instructional Technology<br>Use of tools and pedagogical strategies to create, develop, support, evaluate, and deliver instructional programs or instruction. | SimulationIQ™         | <input type="checkbox"/> Manage logistics and recording setup for OSCE sessions.<br><input type="checkbox"/> Coordinate with faculty on session planning.<br><input type="checkbox"/> Ensure seamless recording and playback of sessions.                    |
|   | ConnectWise®          | <input type="checkbox"/> Provide remote technical support for software and hardware issues.<br><input type="checkbox"/> Troubleshoot connectivity problems during assessments.   |
|   | PowerShell®           | <input type="checkbox"/> Develop scripts to automate desktop setups for efficiency.<br><input type="checkbox"/> Ensure uniform setup across multiple workstations in assessment labs.  |

Below are examples of skills-based assessments requiring technology at UHCOP. For a more comprehensive overview of core skills assessment at UHCOP, please scan the QR code.



-  Immunizations  
Fingerstick blood glucose
-  Patient counseling  
Admission medication history
-  Case-based calculations  
Care plan documentation