

Evaluating Health Professional Student Perspectives of an Interprofessional Education (IPE) Event on Health Equity



Spencer Casella, Pharm.D., RPH, Carolyn Hall Pharm.D., RPH, BCPS, Jessie Hundel, Yulia Murray Pharm.D., Jennifer Prisco Pharm.D., RPH, BA

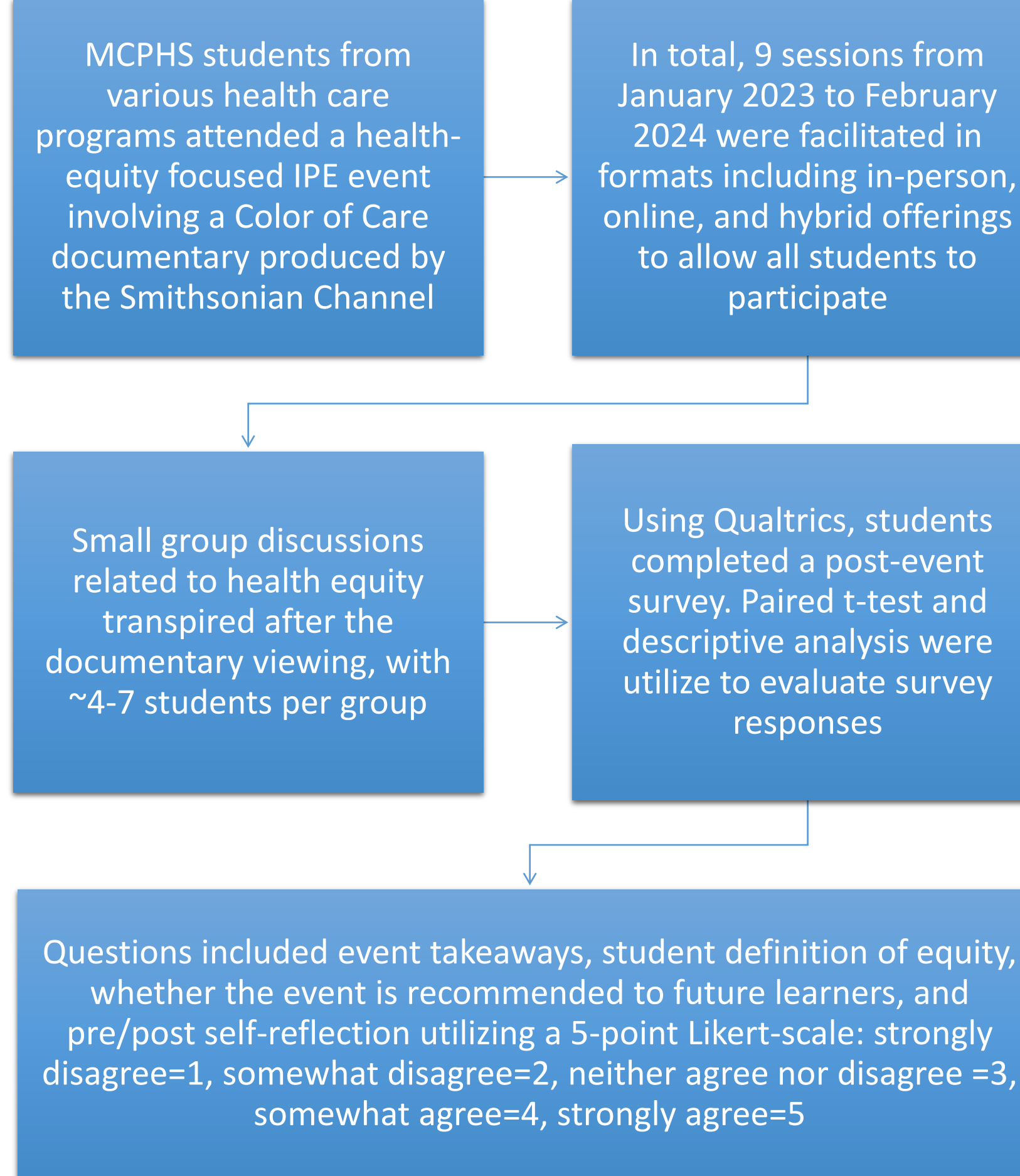
Background

- Interprofessional education is when students from 2+ professions learn about, from, and with each other to enable effective collaboration and improve health outcomes (WHO 2010)
- Interprofessional practice and education focuses on improved health equity as one of the five outcomes within the IPE Quintuple Aim, resulting from interprofessional competency

Objective

- To evaluate health professional student perspectives on an IPE event focusing on health equity

Methods



Results

Table 1: Participating Disciplines



Table 2: IPE event impact on awareness of inequity and health disparities

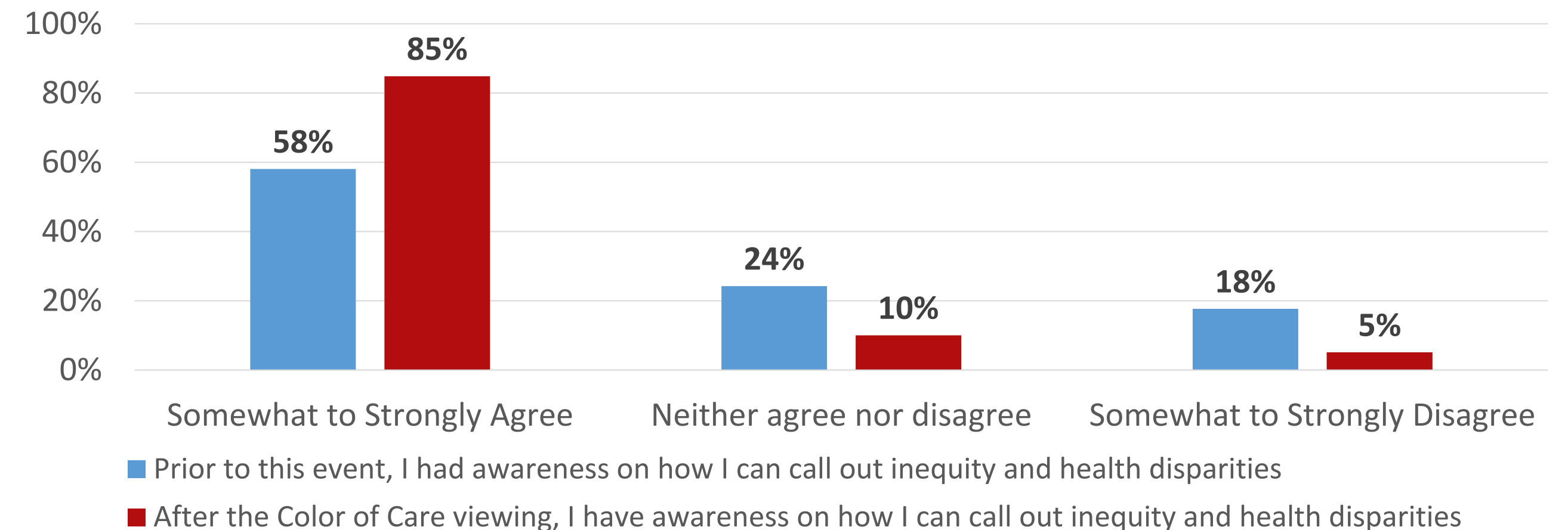


Table 3: Would you recommend this event?

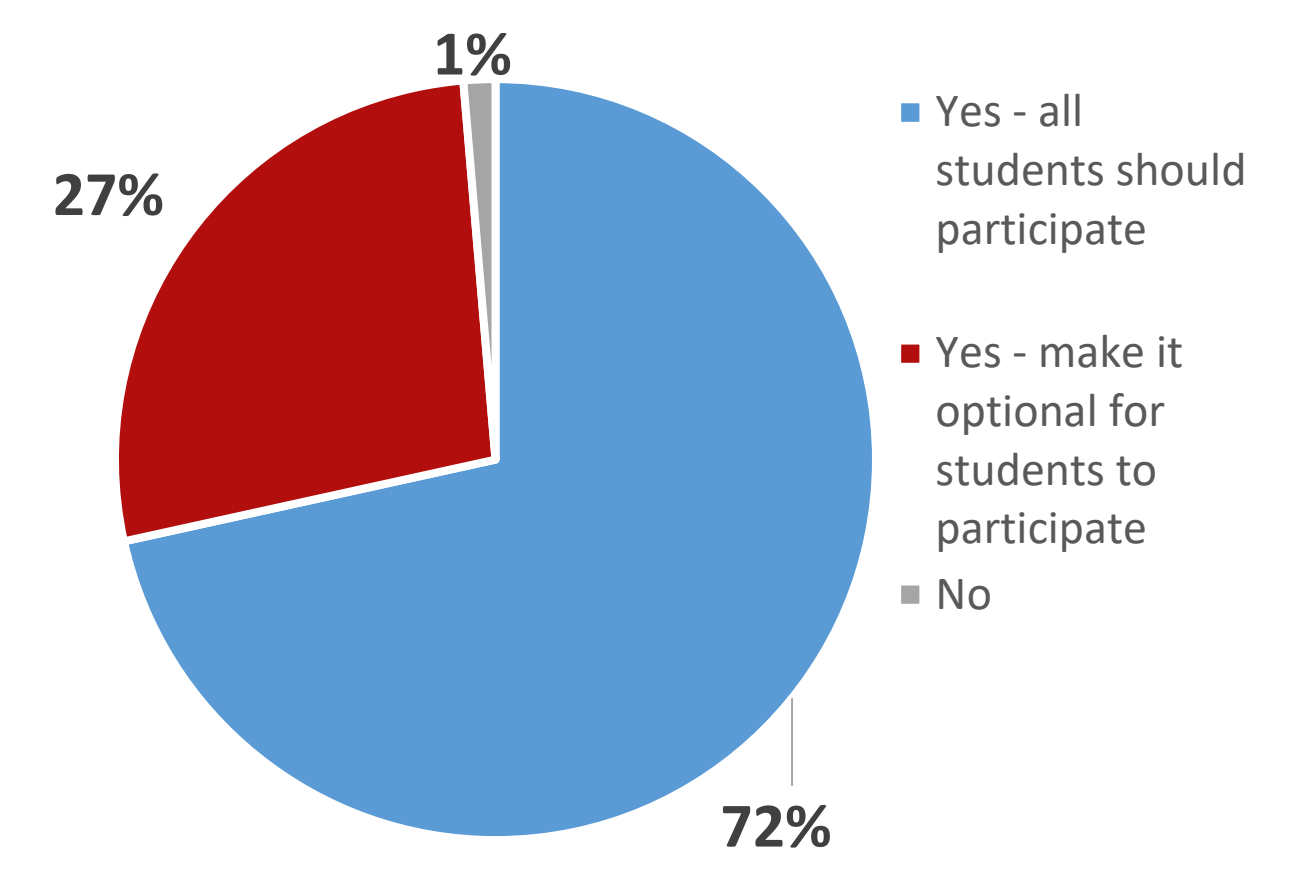


Table 4: IPE event impact on equitable care perceptions

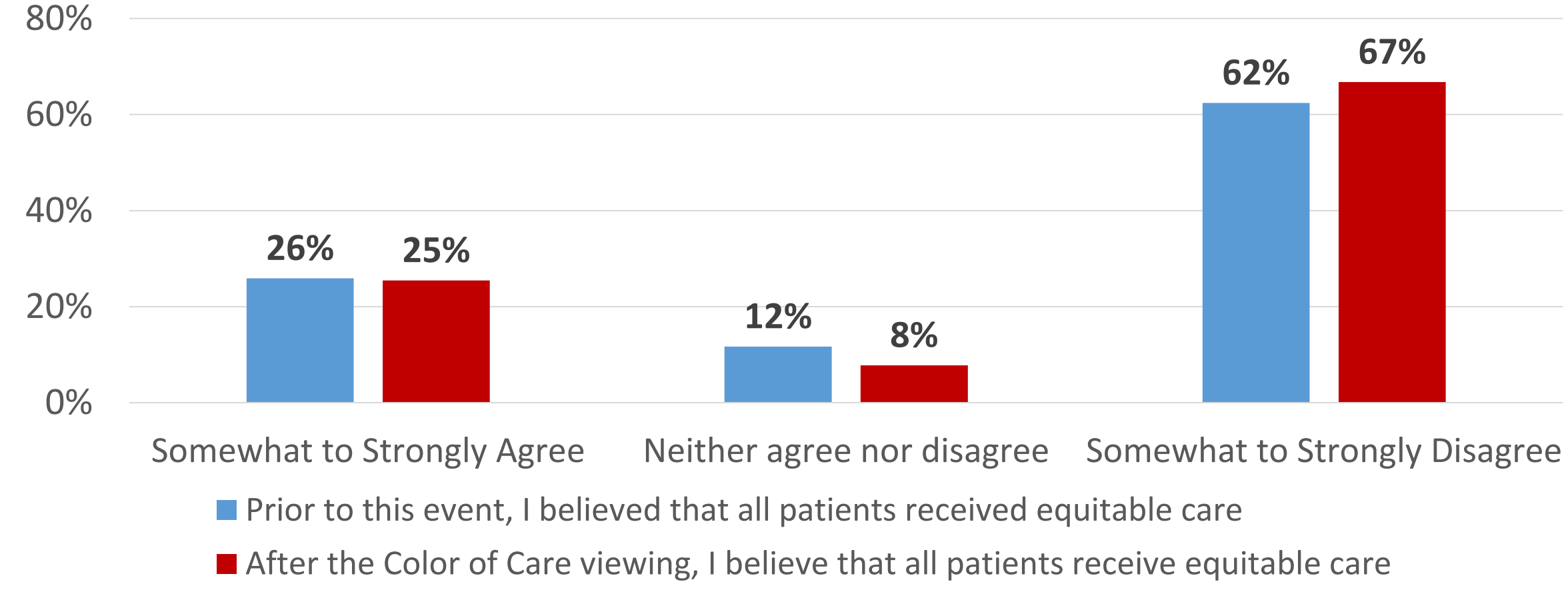
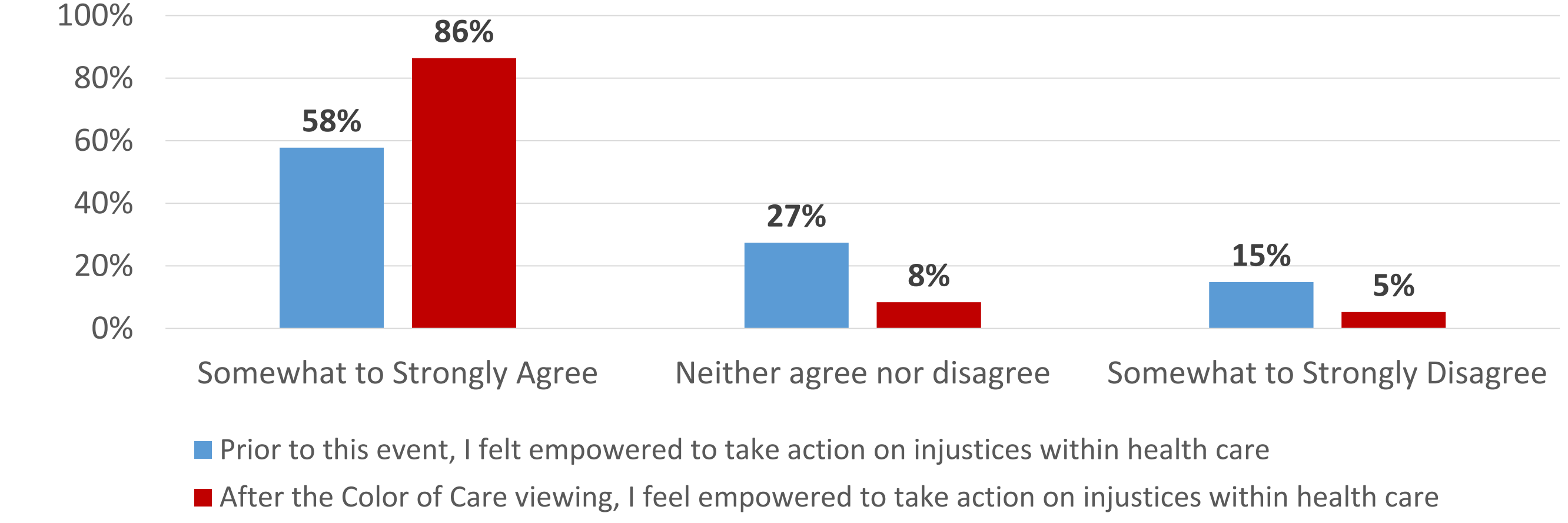


Table 5: IPE event impact to act on health care injustices



Discussion

- Over a period of 13 months, 688 students completed the post-event survey who attended the IPE event
- Most students (98.7%, n=659) recommended the event to other students, with 72% (n=478) recommending required attendance, and 27% (n=181) recommending optional attendance
- After participation, students were significantly more likely to 1) feel empowered to take action on injustices within healthcare and 2) be aware on how to call out inequity and health disparities (p<0.0001 for both)
- Students agreed this event allowed them to actively listen and encourage ideas and opinions of others and allowed them to identify ways to problem-solve and discuss strategies to improve access to healthcare, 4.42/5 and 4.32/5 on a 5-point scale, respectively

Implications/ Conclusion

- The Boston IPE Working Group within the MCPHS Center for Interprofessional Practice and Education aim to continue the offering of this event based on positive results
- This event will serve as an introductory IPE event related to health equity with intentions to 1) help students gain a foundational understanding of health disparities and 2) empower them to work in an interprofessional manner on improving access to care