

# Increasing Access, Measuring Impact: 4 years of a Pre-Pharmacy Pathway Program for Racially Minoritized Students



Tonia Guida<sup>1</sup>, Justina Lipscomb<sup>1,2</sup>, Carolyn Brown<sup>1</sup>, Gregory Caldera<sup>1</sup>

<sup>1</sup>University of Texas at Austin College of Pharmacy, Austin, TX

<sup>2</sup>University Hospital, San Antonio, TX



## Background

- Diversity in the healthcare workforce is critical to providing culturally competent care and addressing the unique needs of varying communities in the U.S.
- Racially minoritized students remain significantly underrepresented in colleges of pharmacy
- The **Project Engage Pharmacy Program (PEPP) Camp** at The University of Texas at Austin – College of Pharmacy (UT-COP) is an initiative designed to address this gap
- PEPP Camp specifically targets first-generation and underrepresented undergraduate students who are interested in pursuing a career in the health professions
- PEPP Camp aims to foster student interest by enhancing their understanding of the pharmacy profession and equipping them with the skills and knowledge they need to succeed in pursuing a pharmacy career
- From 2019 – 2024 (not including 2020 due to COVID), UT-COP faculty, staff, and alumni collaborate to provide this 3-day interactive experience

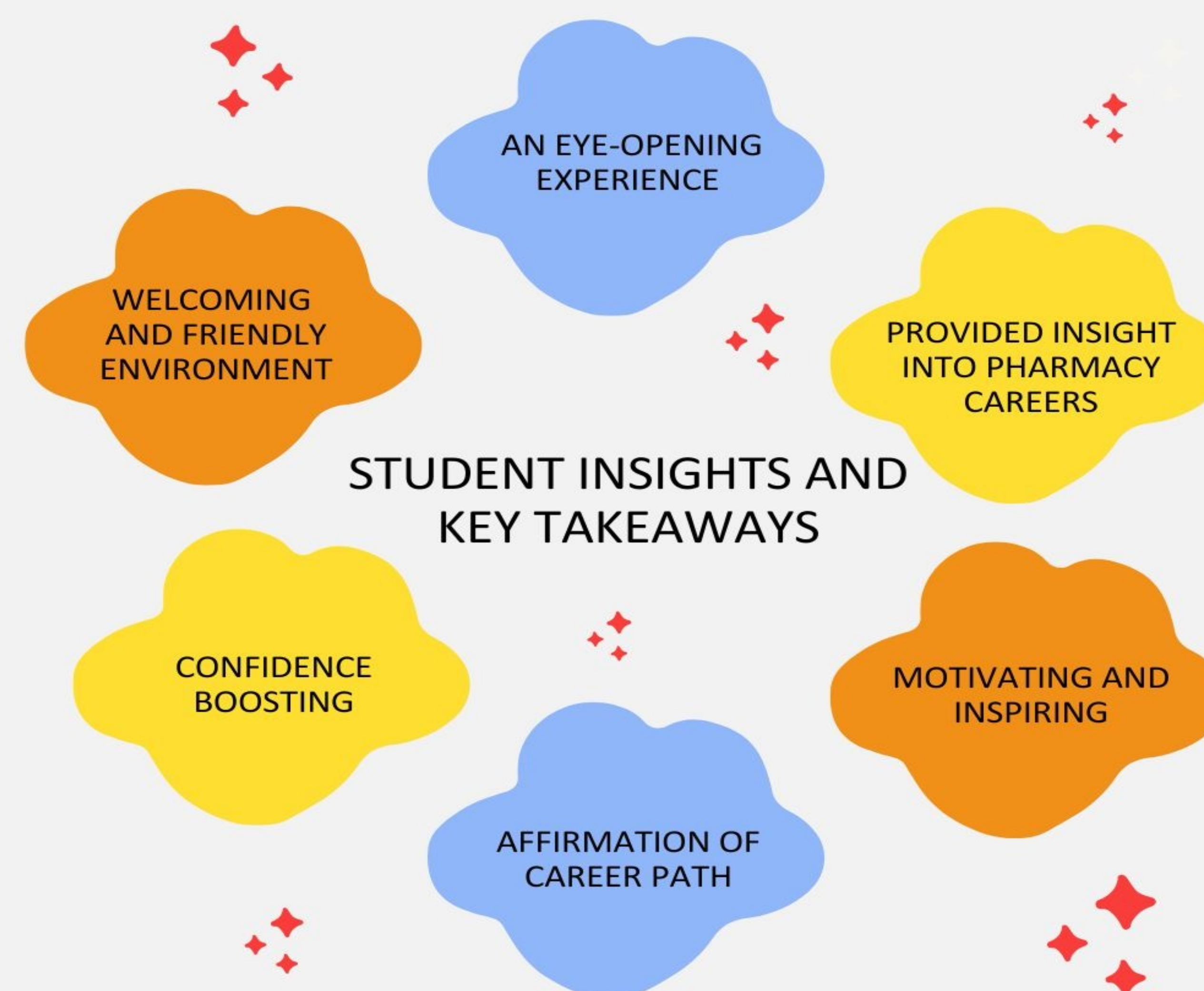


## Eligible Applicants

- First-generation students or low-income college students
- Students attending Historically Black Colleges and Universities (HBCUs) & Hispanic Serving Institutions (HSIs)
- Students must have an interest in the health professions and/or biomedical sciences



## Student Insights and Key Takeaways

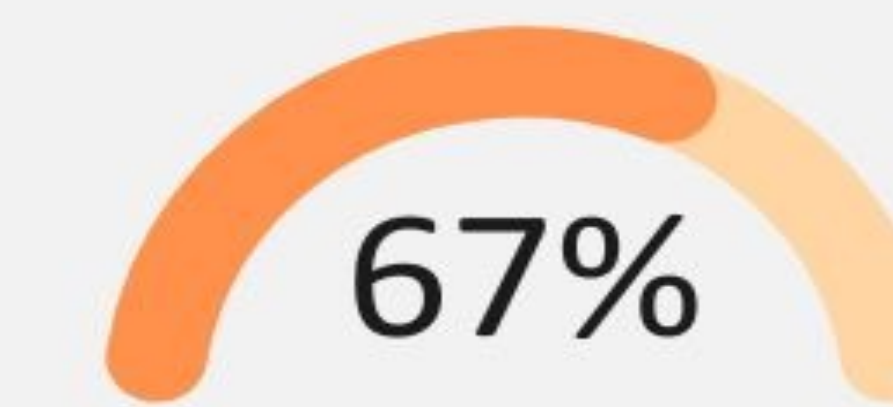
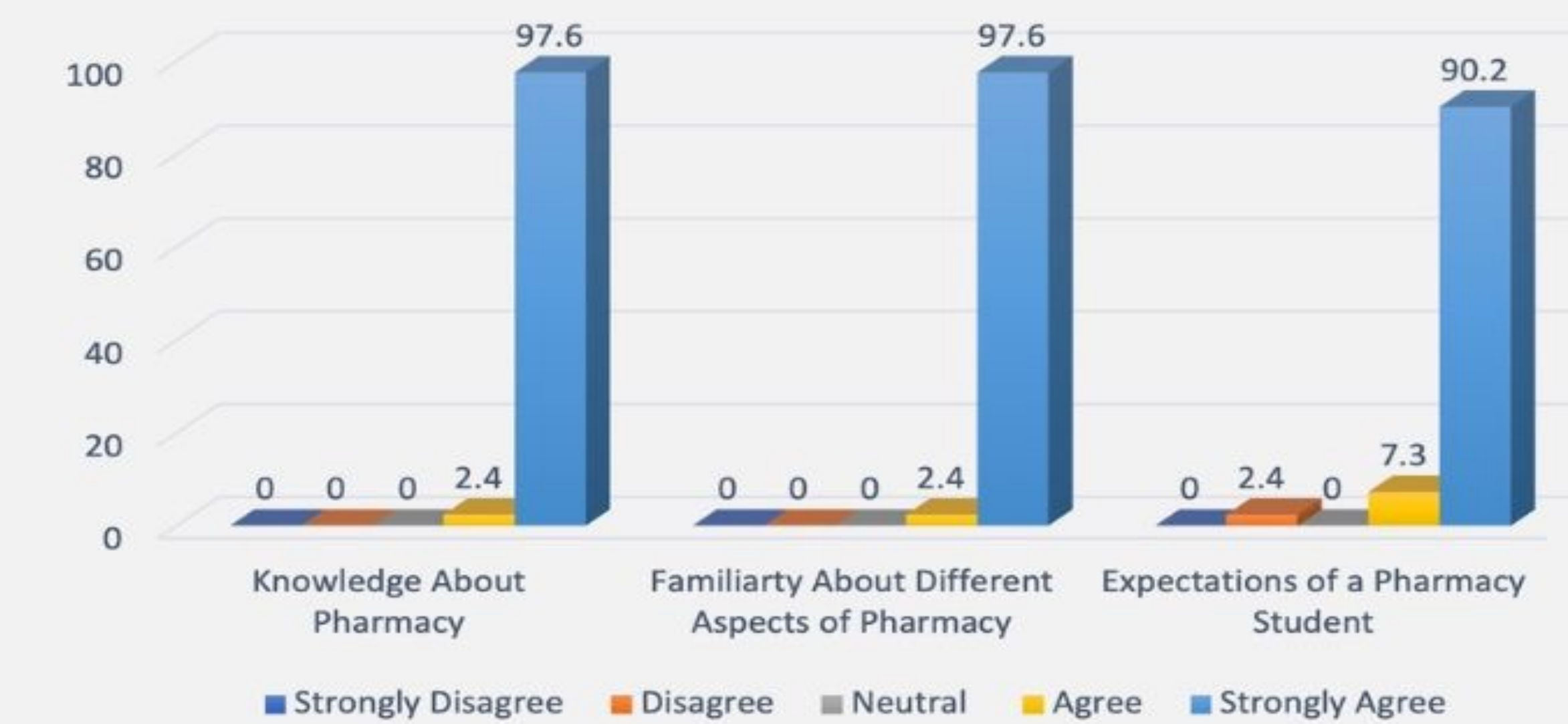


## Key Takeaways

43 Campers



### Perceptions of Pharmacy Following PEPP



29 participants applied to pharmacy or another health profession school



18 participants applied to pharmacy school



16 participants were accepted into a college or school of pharmacy

## Conclusion

Our findings support an evidence-based example of the usefulness of the PEPP Camp in increasing knowledge of pharmacy and recruiting a diverse student body.

## Acknowledgments

The authors have no conflicts of interest to report. We want to acknowledge and thank the National Association for Chain Drug Stores for financial support. A special thanks also goes out to all the participants and volunteers who contributed to PEPP Camp's success over the years.