

Silver diamine fluoride treatment in uncooperative patient with early childhood caries

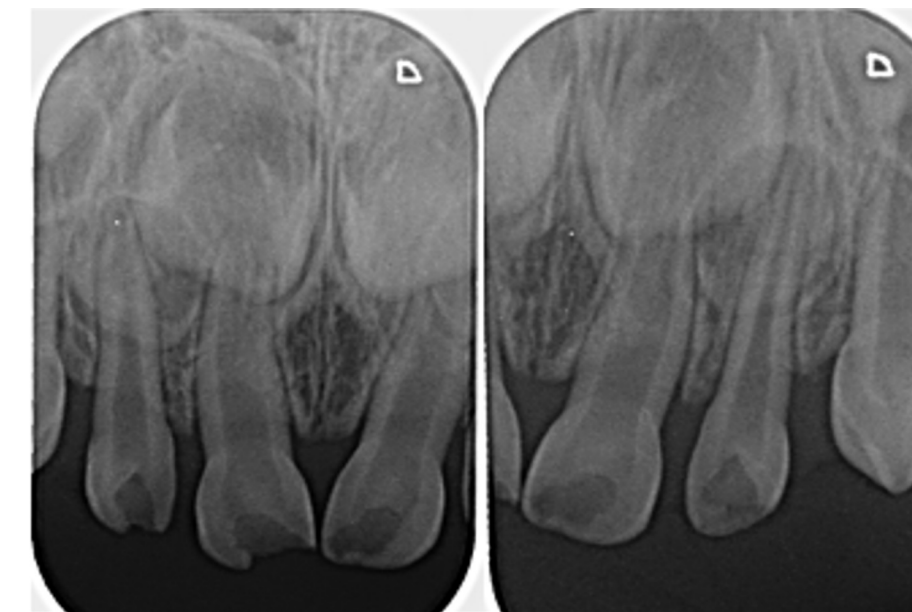
Field C, Jadue V, Carreño D, Tapia R, Suzuki-Barrera K
Postgraduate Programe in Pediatric Dentistry. Faculty of Dentistry, Universidad de los Andes, Chile

Introduction

Silver diamine fluoride (SDF) is a therapeutic agent used for the treatment of carious lesions. It is an antibacterial and remineralizing compound that offers a simple, painless, non-invasive, and cost-effective application. Additionally, SDF provides the possibility to halt or slow down the progression of caries in both primary and permanent teeth without removing healthy tissue, making it a great treatment option for challenging patients.

Case Report

- A 1-year and 9-month-old male patient, Frankl 1 scale
- Medical history of asthma, heart murmur, and hypertrophic tonsils.
- Primary dentition
- Mouth breather.
- Carious lesions on teeth 5.2, 5.1, 6.1, and 6.2

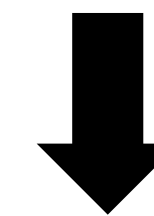
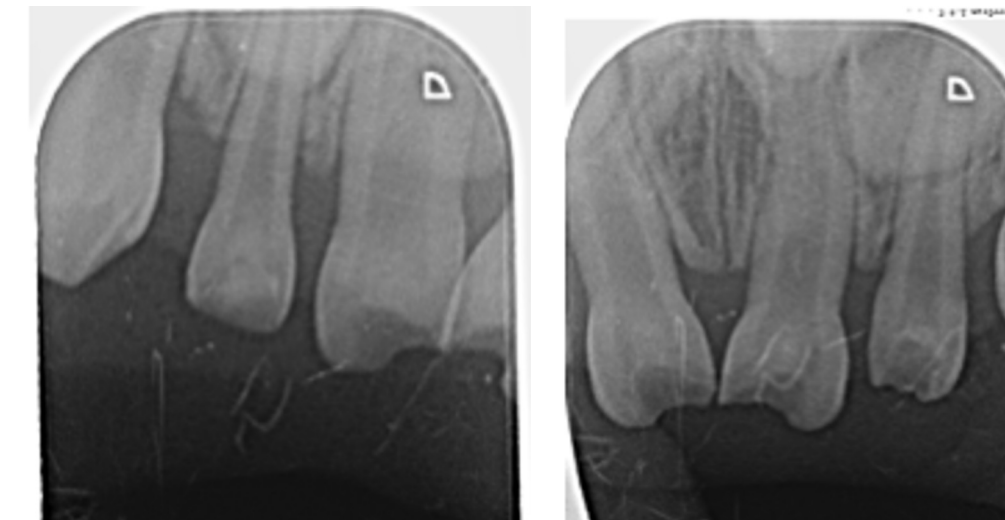


11/22

Silver diamine
fluoride aplication



6-month control



One year control



Alongside the silver diamine fluoride treatment, oral hygiene instructions are provided. Additionally, the mother is informed about the importance of maintaining proper hygiene and a balanced diet suitable for the patient's age. Follow-up checks were conducted at 6 and 12 months, revealing inactive carious lesions and arrested caries progression.

Conclusion

The use of silver diamine fluoride is an effective treatment for managing early childhood caries, especially with young and challenging patients

Reference

Zheng, F. M., Yan, I. G., Duangthip, D., Gao, S. S., Lo, E. C. M., & Chu, C. H. (2022). Silver diamine fluoride therapy for dental care. *The Japanese dental science review*, 58, 249–257. <https://doi.org/10.1016/j.jdsr.2022.08.001>