

Conservative Management of Severe Ectopic Eruption: Case Report

Maldonado, M., Ramírez, A., Becerra, D., Weinrauch, B., Cabezas, R.

Postgraduate Programe in Pediatric Dentistry. Faculty of Dentistry, Universidad de los Andes, Chile



Universidad de
los Andes

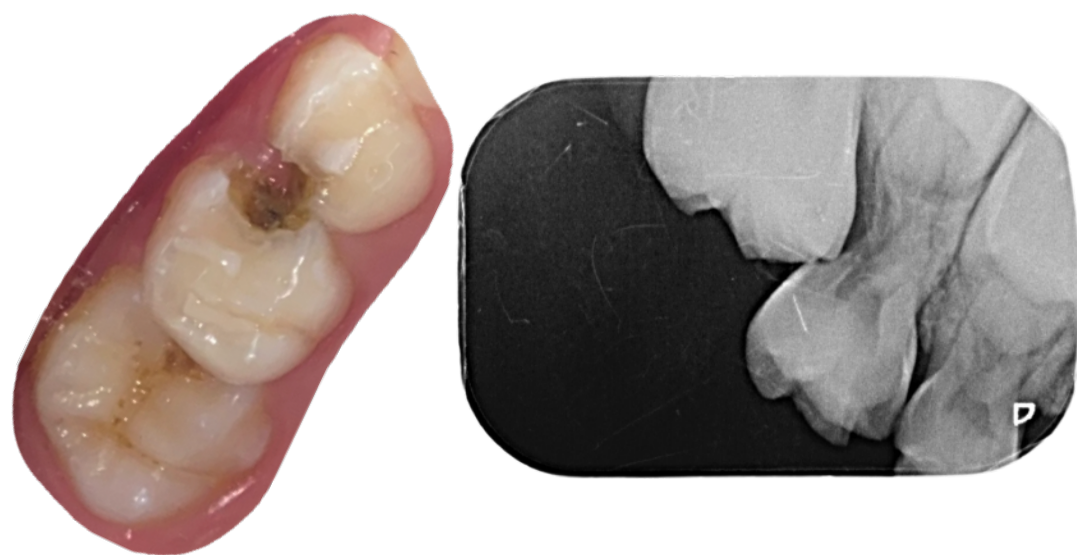
Introduction

The space between canines and primary molars must be kept intact, as it determines the preservation of the space necessary for the eruption of canines and premolars. Ectopic eruption can affect that space, due to an abnormal mesioangular eruption of the first permanent molar, which leads to an impaction and resorption at the distal surface of the second primary molars. The objective of this case report is to present a conservative management of severe ectopic eruption.

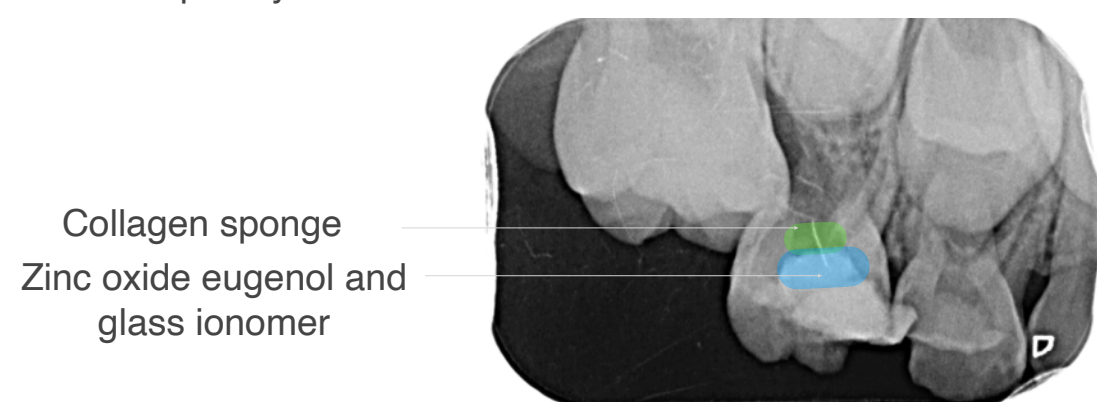
Case Report

- 7-year, 4-month old male patient, Frankl 2 scale.
- Anal atresia.
- First phase mixed dentition, high cariogenic risk, caries activity (df 8 and DMFT 0).
- Generalized gingivitis induced by dental biofilm
- Supernumerary in relation to tooth 6.3
- Ectopic eruption of tooth 1.6

Tooth 5.5 with ICDAS 5, root resorption and no signs of mobility

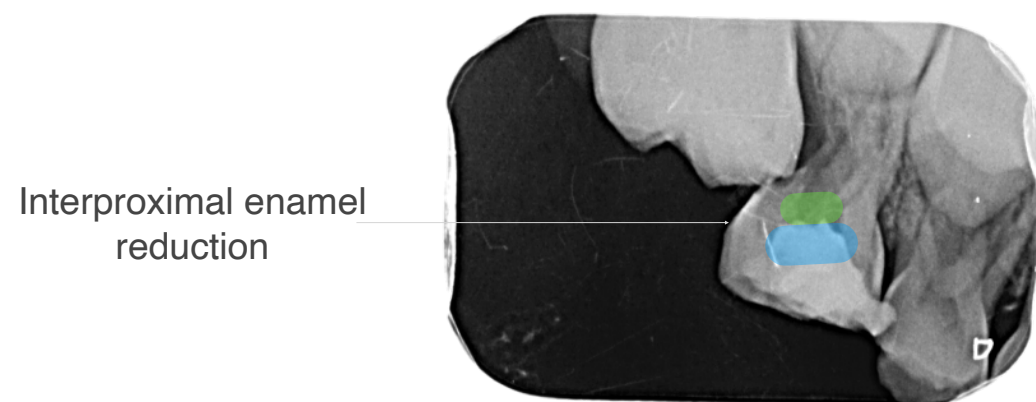


The patient reports spontaneous pulsatil pain in tooth 5.5, based on this and radiographic image, trepanation was performed, leaving a collagen sponge and glass ionomer. The treatment decision was based on relieving the pain, but the final treatment would be defined over time, with a multidisciplinary team.



Collagen sponge
Zinc oxide eugenol and
glass ionomer

It was determined that interproximal enamel reduction would be performed on the distal surface of the second primary molar, as an initial fase. Once the cooperation of the patient has improved, other treatments would be considered.



Interproximal enamel
reduction



Difficulty in disking due
to limited aperture

The final determination of the treatment will be based on the following aspects

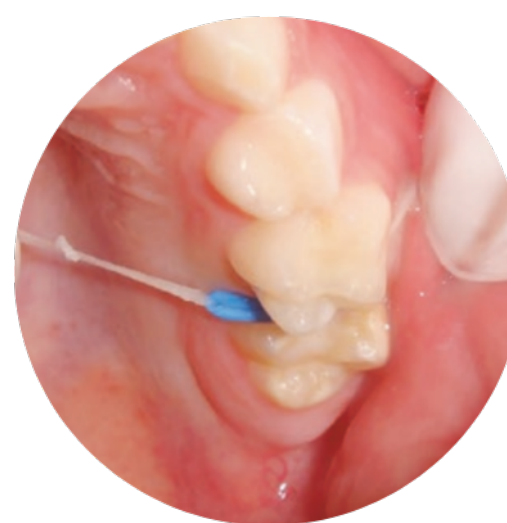
✓ Grade of resorption and fracture risk

✓ Blockage magnitude and direction of the first molar

✓ Eruption chronology

✓ Patient cooperation

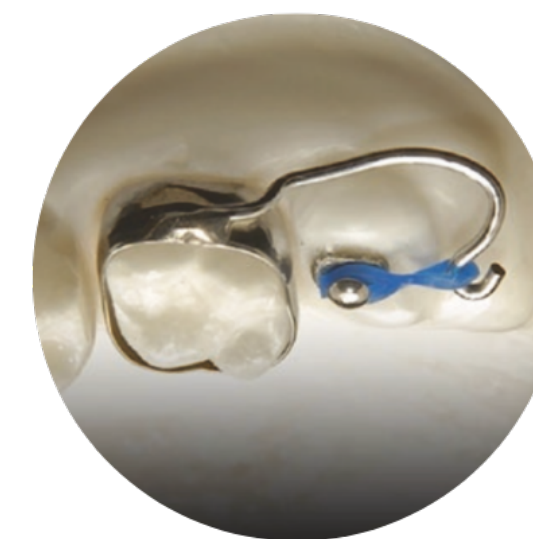
Different treatment options are described in the literature



Orthodontic elastic
separator



Separating spring



Halterman appliance



Space maintainer

Conclusion

Ectopic eruption has several repercussions, so it is important to make an early diagnosis and appropriate treatment. Although there are several ways to treat ectopic eruption with great results, it is important to consider several aspects about the patient, in order to achieve adherence to treatment and therefore favorable results.

References

Montoro MG, Martín TA. ERUPCIÓN ECTÓPICA DEL PRIMER MOLAR PERMANENTE. REVISIÓN BIBLIOGRÁFICA. 2021

Soxman JN., Wunsch P, Haberland C. Anomalies of the Developing Dentition, A Clinical Guide to Diagnosis and Management. Switzerland, Springer 2019

González AIH. ERUPCIÓN ECTÓPICA DEL PRIMER MOLAR PERMANENTE SUPERIOR: PREVALENCIA Y CARACTERÍSTICAS DENTOESEQUELÉTICAS EN POBLACIÓN INFANTIL Máster Oficial en Ciencias Odontológicas Universidad Complutense de Madrid. 2019