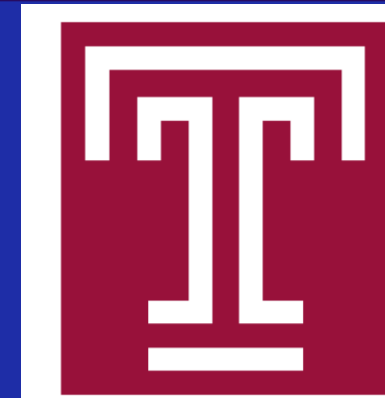




WESTCHESTER
MEDICAL CENTER

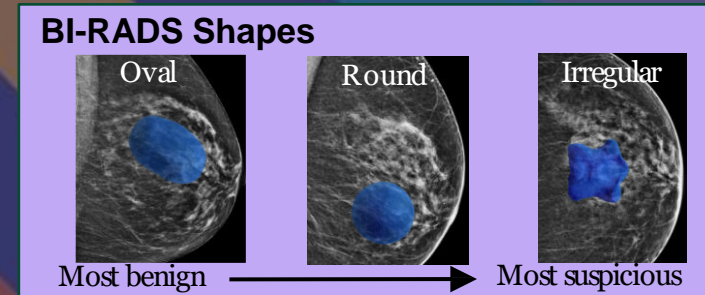
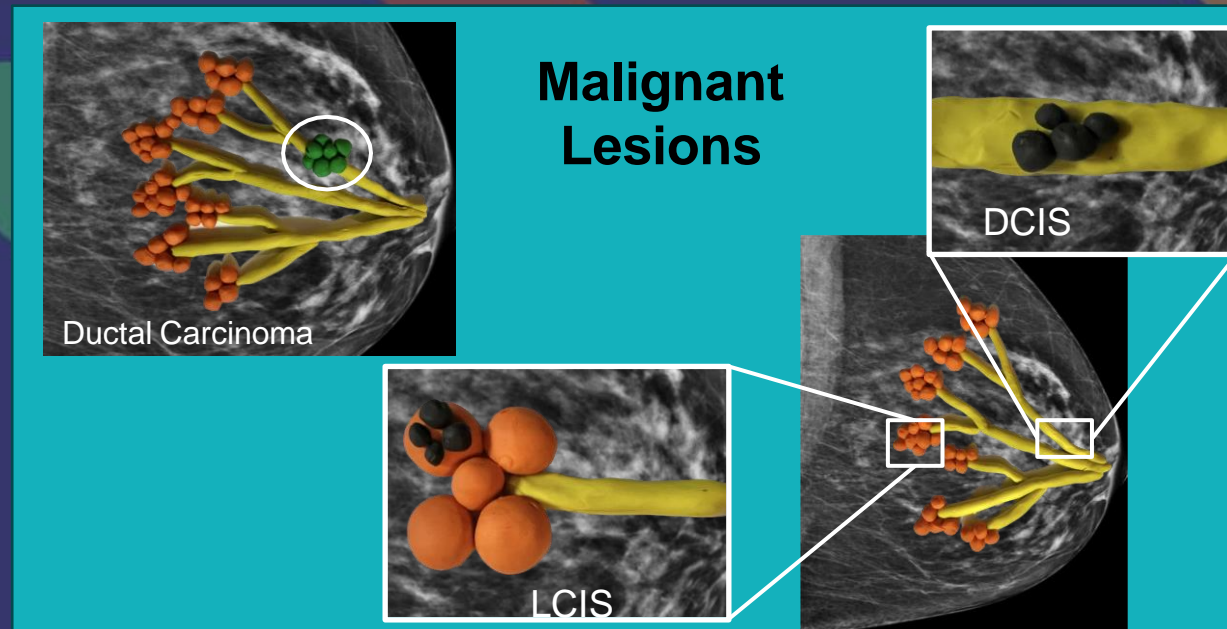
Utilizing Clay Models for Resident and Patient Education to Understand Benign and Malignant Breast Conditions



Daniella Herman MD¹, Mayer Rubin MD¹, Sonia Hur MD¹, Mirza Baig MD¹, Daniel Edelman MD¹,
Brian Tung MD¹, Perry Gerard MD MBA FACR¹, Jared Meshekow MD MPH²
Department of Radiology, Westchester Medical Center¹/ Temple Health²

Background

- Effective communication between healthcare providers and patients is essential for the successful management and follow-up of breast conditions.
- We introduce the use of clay models as a novel and tactile approach to facilitate both patient education and resident training and fully convey the complex nuances of breast conditions.
- Patients who receive one-on-one explanation utilizing 3D breast models can experience increased comfort, adherence, and follow-up.
- Residents who receive training using clay models can improve knowledge retention and obtain a greater understanding of breast anatomy, lesions, and tumor characteristics.



Conclusion

- The use of clay models represents an innovative and effective approach to educate patients and medical residents about benign and malignant breast conditions.
- This not only enhances residents' knowledge and understanding but also empowers patients to actively participate in their own healthcare decisions.
- Incorporating clay models into breast health education can improve communication, promote informed decision-making, and ultimately lead to better outcomes for patients with breast conditions.

BI-RADS Margins

