

“New Blood”: Importance of Identification of Coronary Artery Stents on Plain Film and Imaging Studies in the ER Workplace

Brian Tung MD¹, Mirza Baig MD¹, Daniel Edelman MD¹, Jared Meshekow MD MPH², Perry Gerard MD MBA FACR¹

Westchester Medical Center Valhalla NY¹; Temple University Hospital Philadelphia, PA²

PURPOSE

Patients may present to the ER unconscious or without knowledge of previous cardiac intervention with stent placement. Such information is important since it may help guide the ER physicians in a more detailed diagnosis and patient care.

We aim to highlight the importance of identifying coronary artery stents in an emergent setting to help guide treatment plans.

BACKGROUND

Cardiac patients who are incapacitated or unaware of their medical history require additional tailored care in the emergent setting. The use of radiography can help identify such patients.

Patients may not always have complete knowledge or recall of the specific procedures that have been performed on them, including the placement of coronary artery stents. This is not uncommon, as patients may undergo multiple medical interventions during their course of treatment, and it can be challenging to remember all the details. To ensure patient safety and appropriate care, it's crucial for patients to actively participate in their healthcare.

METHOD

It's important to note that the visibility of stents on radiographs can vary depending on factors such as the type of stent used, its composition, the X-ray technique, and the patient's anatomy. Additional imaging modalities such as coronary angiography, computed tomography angiography may be necessary for accurate stent visualization, location and assessment.

Results

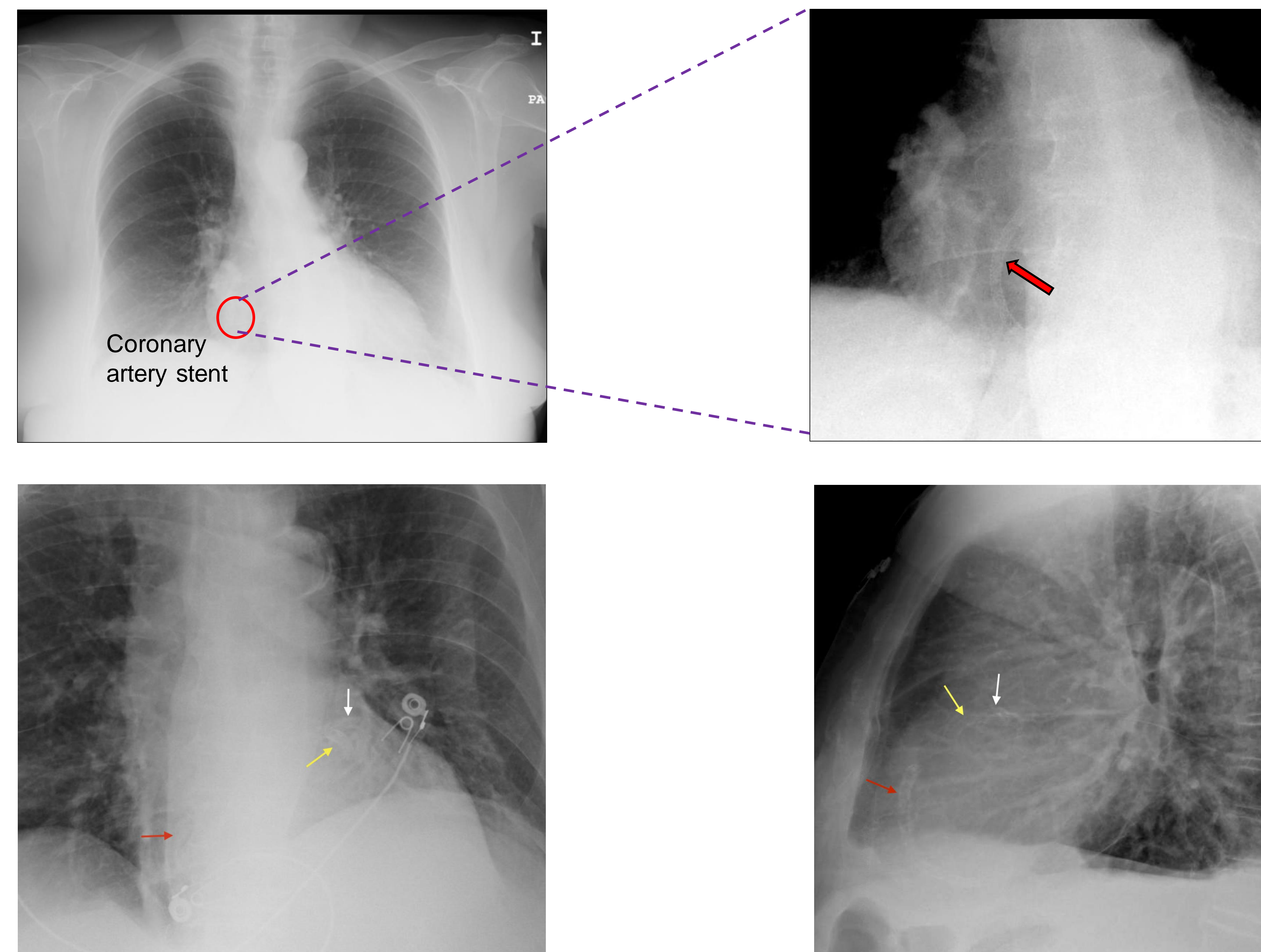


Figure 1. Frontal and lateral radiographs of the chest. Yellow arrow represents LAD stent, white arrow represent LCx stent, and red arrow represents RCA stent

Identifying coronary artery stents on chest radiographs can be challenging because stents are small metallic structures that may not be well visualized (Figure 1).

It is important to recognize coronary artery stents as patients may not be aware they had this procedure, on presentation to the emergency room.

We discuss the importance of coronary artery stent recognition as it can help in diagnosis and guide the ER physician in patient treatment.

CONCLUSION

Identifying coronary artery stents on chest X-rays can be challenging because the stents may not be well visualized. Detection is important as patients may not get follow-up imaging studies if they are not recognized. The detection can provide information for the ER physician with respect to ongoing management or follow-up.

REFERENCES

1. Castrillo F, Coronary stent (on chest x-ray). Case study, Radiopaedia.org (Accessed on 01 Apr 2024) <https://doi.org/10.53347/rID-73934>
2. Yelamanchili, V. S. (2023, June 5). *Coronary artery stents*. StatPearls [Internet]. <https://www.ncbi.nlm.nih.gov/books/NBK559287/>

