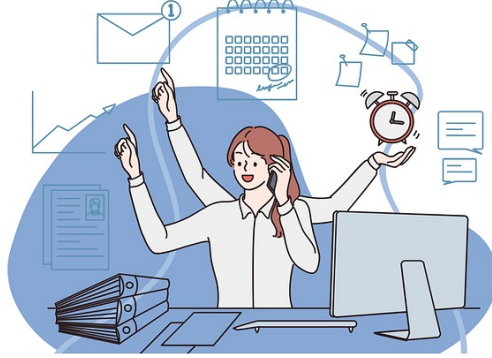


The Call Dictation Template Cascade for Trainees

J. James Gahng, MD/MPH

BACKGROUND

For trainees, the first few call shifts can be daunting as a variety of studies may be ordered by clinicians. When compounded by the number of studies that can accumulate in a moments notice, "list anxiety" can become real.¹ With hopes to alleviate the pressure on trainees during this transitional period, a list of most frequently used dictation templates with add-ins or "cascades" were created that encompass most studies from the emergency department.



METHOD

During a two-month period at a level I trauma center, the number of cross-sectional imaging studies ordered by the emergency department was tallied. The most common types of CT studies were ranked in order of occurrence and separated by section and indication. This information was then used to create a list of most frequently templates using add-ins under existing default structured reporting templates of the institution.

RESULTS

The most common types of studies from the emergency room were obtained to create a rank list of CT template cascades. Templates were separated by traumatic and non-traumatic indications as there were different default statements. Neuroradiology templates were separated as a remove-as-needed approach better suited these templates. Most of the emergency department cases were able to be covered by the 15 templates on the list.

Top CT Template Cascades

Neuroradiology

1. Head without contrast
2. Head, cervical spine, mandible/facial bone without contrast^a
3. Head and neck angiography with perfusion^a
4. Neck with contrast
5. Orbits with contrast

^a Remove sections as needed

Trauma

1. Chest without contrast
 - + Abdomen and pelvis without contrast
 - + Thoracic and lumbar spine
2. Abdomen and pelvis without contrast
 - + Lumbar spine
3. Chest angiography (aorta or hemorrhage)
 - + Abdomen and pelvis angiography
 - + Extremity runoff
4. Abdomen and pelvis angiography
 - + Extremity runoff
5. Upper or lower extremities

Non-trauma

1. Abdomen and pelvis with contrast
2. Abdomen and pelvis without contrast
3. Chest without contrast
 - + Abdomen and pelvis without contrast
4. Chest with contrast (pulmonary embolus)
 - + Abdomen and pelvis angiography (single or multiphase)
 - + Extremity runoff
 - + Abdomen and pelvis with contrast
5. Abdomen and pelvis angiography
 - + Extremity runoff



Renaissance
School of Medicine
Stony Brook University

CONCLUSION

The most frequently used dictation templates were reduced to the top 5 in each category. Having a variety of dictation template readily available to be employed during call may alleviate the initial burden of call for trainees as it negates the need to search and edit templates for each different scenario, ultimately saving time and frustration.



REFERENCES

¹ Stock M, Mardakhaev E, Burns J. Performance Anxiety in Radiology Education and Clinical Practice. J Am Coll Radiol. 2023;20(11):1162-1167. doi:10.1016/j.jacr.2023.06.038