

Navigating the Intricacies of Vegetation Management and Visual Mitigation

DESIGN

- ☀️ Visually Sensitive Resources
- ☀️ Co-benefits
- ☀️ Topography and Line of Sight
- ☀️ Available Space
- ☀️ Regulatory Requirements

COMMUNICATION

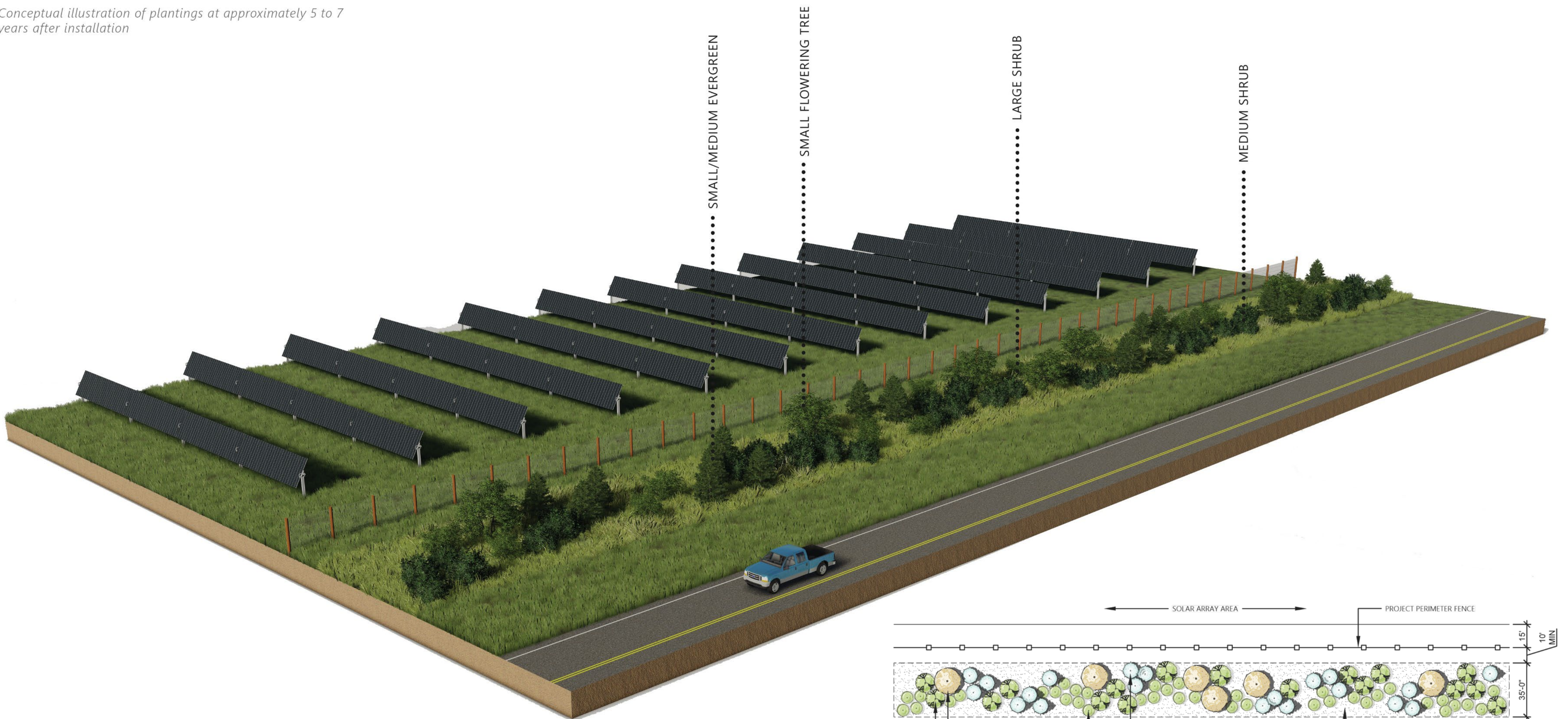
- ☀️ Local Knowledge
- ☀️ Community Outreach
- ☀️ Stakeholder Engagement
- ☀️ Agency Precedent (NY/OH)
- ☀️ Continuous Coordination

IMPLEMENTATION

- ☀️ Plant Material Quantity
- ☀️ Project Cost
- ☀️ Construction Sequencing
- ☀️ Establishment / Survival
- ☀️ Operations and Maintenance

LANDSCAPE PLANTING MODULE 3 400ft segment shown as example

Conceptual illustration of plantings at approximately 5 to 7 years after installation



LEGEND OF EXAMPLE PLANT SPECIES

- | | | | | | |
|--|--|---|---|---|---|
| <p>MEDIUM DECIDUOUS TREE
 <i>Acer rubrum</i> / Red Maple
 <i>Carpinus caroliniana</i> / American Hornbeam
 <i>Ostrya virginiana</i> / Hop Hornbeam
 <i>Oxydendrum arboreum</i> / Sourwood</p> | <p>SMALL FLOWERING TREE
 <i>Amelanchier</i> spp. / Serviceberry
 <i>Cercis canadensis</i> / Redbud
 <i>Cornus florida</i> / Flowering Dogwood</p> | <p>LARGE EVERGREEN
 <i>Picea glauca</i> var. <i>Densata</i> / Black Hills Spruce
 <i>Picea pungens</i> / Colorado Blue Spruce
 <i>Pinus strobus</i> / Eastern White Pine</p> | <p>SMALL/MEDIUM EVERGREEN
 <i>Juniperus virginiana</i> / Eastern Red Cedar
 <i>Picea pungens</i> 'Fat Albert' / Fat Albert Blue Spruce</p> | <p>LARGE SHRUB
 <i>Cornus racemosa</i> / Gray Dogwood
 <i>Rhus typhina</i> / Staghorn Sumac
 <i>Salix discolor</i> / Pussy Willow
 <i>Sambucus canadensis</i> / Elderberry
 <i>Viburnum lentago</i> / Nannyberry</p> | <p>MEDIUM SHRUB
 <i>Aronia arbutifolia</i> / Red Chokeberry
 <i>Aronia melanocarpa</i> / Black Chokeberry
 <i>Cephalanthus occidentalis</i> / Buttonbush
 <i>Cornus amomum</i> / Silky Dogwood
 <i>Cornus sericea</i> / Red Twig Dogwood
 <i>Ilex verticillata</i> / Winterberry
 <i>Myrica pensylvanica</i> / Northern Bayberry</p> |
|--|--|---|---|---|---|

LAND USE

- ☀️ Current Land Use
- ☀️ Adjacent Land Use
- ☀️ Neighbor Agreements
- ☀️ Decommissioning

SITE CONDITIONS

- ☀️ Soil Characteristics
- ☀️ Drainage
- ☀️ Exposure
- ☀️ Snow Drifting and Roadways

MANAGEMENT

- ☀️ Pollinator Habitat
- ☀️ Wildlife Habitat
- ☀️ Agricultural Integration
- ☀️ Invasive Species Management

SITING+
PERMITTING

MARCH 11 – 13, 2024 | COLORADO SPRINGS, CO

Presenting Authors:

Andrew Britton
Associate, Landscape Architecture
abritton@edrdpc.com

Chris Cunningham
Associate, Environmental Services
ccunningham@edrdpc.com

EDDR

a better environment



Learn More Here